

Bioregioning: pick any card for positive change.

Work at the Edges

Dismantle barriers between sectors so that information and 'can-do' starts to flow.

Work at the interface between the urban and the rural, not 'either/or' but both together.



See the Whole

Make the region visible to itself: clear identity and sense of belonging... but a fuzzy edge.

Refine a Story of Place that extends back into deep time and forward into future potential, recovering what is in danger of disappearing (skills, culture).



Pay Attention to Systems

Systems are made up of relationships and flows: Eco-systems, human health systems, drinking water systems, food systems...

Systems thinking becomes systems acting through networks of practitioners.



Map for Vitality

Map the dreams of your bioregion as a social, cultural and creative activity.

Make visible all the green shoots of resilience on the ground and celebrate.



Prototype & Learn

Create a learning region, confidently working without a masterplan and at different scales, adapting your actions in response to learning what does and does not work.

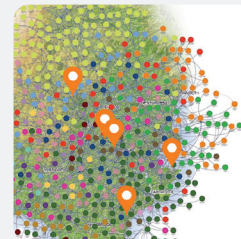
Trial local solutions, like making plastic from algae or setting up a mini circular economy.



Collaborate

Design solutions together with many stakeholders, addressing conflicts as an opportunity to take the work to the next level.

Respond rapidly to crises through strong networks of connectedness.



Establish Baselines

Democratise knowledge by establishing baselines of health, and ways of measuring, that any community can use.

Bring civil society into the centre of the frame.



Tell How-to Stories

Raise the potential of a bioregion to operate at its best: telling a can-do story of resilience and possibility.

Source solutions from the place itself: valuing local examples and local knowledge.



Share Governance

Valuing natural assets as the building blocks of life: talking about sea, air, soil and water as 'common pool resources' that we all need to steward.

Create or adapt new governance structures that allow shared decision making

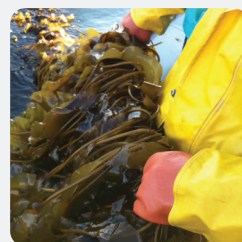


Photo credits: **Work at the Edges** - Maria Eklind CC, **See the Whole** - David McCloskey's Cascadia Bioregion map, Alex Philip @BigDataAlex, **Pay Attention to Systems** - J.Brady, **Map for Vitality** - Smelling soil, Glenn Page, **Prototype & Learn** - Algae Platform, Atelier Luma, **Collaborate** - J. Brady, **Establish Baselines** - J. Brady, **Tell How-to Stories** - Farmer's Hands, J.Brady, **Share Governance** - Kelp farming from a guide to the processes, techniques, and equipment for farming kelp in New England Waters by Katie Flavin, Nick Flavin and Bill Flahive PhD.



THE
BIOREGIONAL
LEARNING
CENTRE

